

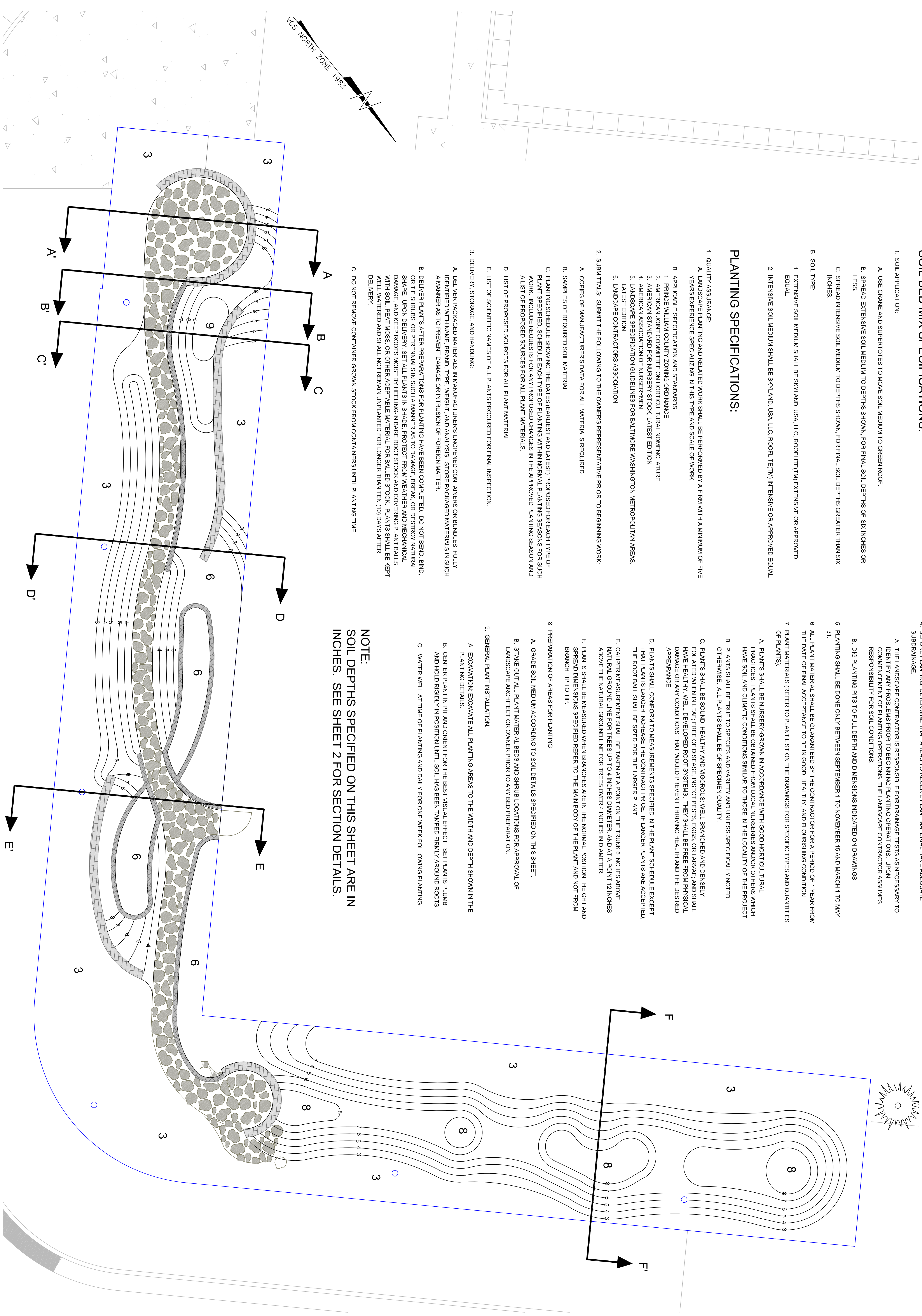
SOIL BED MIX SPECIFICATIONS:

1. SOIL APPLICATION:
 - A. USE CRANE AND SUPERTOTES TO MOVE SOIL MEDIUM TO GREEN ROOF.
 - B. SPREAD EXTENSIVE SOIL MEDIUM TO DEPTHS SHOWN, FOR FINAL SOIL DEPTHS OF SIX INCHES OR LESS.
 - C. SPREAD INTENSIVE SOIL MEDIUM TO DEPTHS SHOWN, FOR FINAL SOIL DEPTHS GREATER THAN SIX INCHES.
2. SOIL TYPE:
 1. EXTENSIVE SOIL MEDIUM SHALL BE SKYLAND, USA, LLC, (ROOFLITE™) EXTENSIVE OR APPROVED EQUAL.
 2. INTENSIVE SOIL MEDIUM SHALL BE SKYLAND, USA, LLC, (ROOFLITE™) INTENSIVE OR APPROVED EQUAL.

PLANTING SPECIFICATIONS:

1. QUALITY ASSURANCE:
 - A. LANDSCAPE PLANTING AND RELATED WORK SHALL BE PERFORMED BY A FIRM WITH A MINIMUM OF FIVE YEARS EXPERIENCE SPECIALIZING IN THIS TYPE AND SCALE OF WORK.
 - B. APPLICABLE SPECIFICATION AND STANDARDS:
 1. PRINCE WILLIAM COUNTY ZONING ORDINANCE
 2. AMERICAN JOINT COMMITTEE ON HORTICULTURAL NOMENCLATURE
 3. AMERICAN STANDARD FOR NURSERY STOCK, LATEST EDITION
 4. AMERICAN ASSOCIATION OF NURSERMEN
 5. LANDSCAPE SPECIFICATION GUIDELINES FOR BALTIMORE WASHINGTON METROPOLITAN AREAS, LATEST EDITION
 6. LANDSCAPE CONTRACTORS ASSOCIATION
2. SUBMITTALS: SUBMIT THE FOLLOWING TO THE OWNERS REPRESENTATIVE PRIOR TO BEGINNING WORK:
 - A. COPIES OF MANUFACTURERS DATA FOR ALL MATERIALS REQUIRED
 - B. SAMPLES OF REQUIRED SOIL MATERIAL
 - C. PLANTING SCHEDULE SHOWING THE DATES (EARLIEST AND LATEST) PROPOSED FOR EACH TYPE OF PLANT SPECIFIED, SCHEDULE EACH TYPE OF PLANTING WITHIN NORMAL PLANTING SEASONS FOR SUCH WORK. INCLUDE REQUESTS FOR ANY PROPOSED CHANGES IN THE APPROVED PLANTING SEASON AND A LIST OF PROPOSED SOURCES FOR ALL PLANT MATERIALS.
 - D. LIST OF PROPOSED SOURCES FOR ALL PLANT MATERIAL.
 - E. LIST OF SCIENTIFIC NAMES OF ALL PLANTS PROCURED FOR FINAL INSPECTION.
3. DELIVERY, STORAGE, AND HANDLING:
 - A. DELIVER PACKAGED MATERIALS IN MANUFACTURERS UNOPENED CONTAINERS OR BUNDLES, FULLY IDENTIFIED WITH NAME, BRAND, TYPE, WEIGHT, AND ANALYSIS. STORE PACKAGED MATERIALS IN SUCH A MANNER AS TO PREVENT DAMAGE OR INTRUSION OF FOREIGN MATTER.
 - B. DELIVER PLANTS AFTER PREPARATIONS FOR PLANTING HAVE BEEN COMPLETED. DO NOT BEND, BIND, OR THE SHRUBS OR PERENNIALS IN SUCH A MANNER AS TO DAMAGE, BREAK, OR DESTROY NATURAL SHAPE. UPON DELIVERY, SET ALL PLANTS IN SHADE, PROTECT FROM WEATHER AND MECHANICAL DAMAGE, AND KEEP ROOTS MOIST BY HEELING IN BARE ROOT STOCK AND COVERING PLANT BALLS WITH SOIL, PEAT MOSS, OR OTHER ACCEPTABLE MATERIAL FOR BALLED STOCK. PLANTS SHALL BE KEPT WELL WATERED AND SHALL NOT REMAIN UNPLANTED FOR LONGER THAN TEN (10) DAYS AFTER DELIVERY.
 - C. DO NOT REMOVE CONTAINER-GROWN STOCK FROM CONTAINERS UNTIL PLANTING TIME.
4. BEFORE PLANTING, DETERMINE THAT AREAS TO RECEIVE PLANT MATERIAL HAVE ADEQUATE SUBDRAINAGE:
 - A. THE LANDSCAPE CONTRACTOR IS RESPONSIBLE FOR DRAINAGE TESTS AS NECESSARY TO IDENTIFY ANY PROBLEMS PRIOR TO BEGINNING PLANTING OPERATIONS. UPON COMMENCEMENT OF PLANTING OPERATIONS, THE LANDSCAPE CONTRACTOR ASSUMES RESPONSIBILITY FOR SOIL CONDITIONS.
 - B. DIG PLANTING PITS TO FULL DEPTH AND DIMENSIONS INDICATED ON DRAWINGS.
 5. PLANTING SHALL BE DONE ONLY BETWEEN SEPTEMBER 1 TO NOVEMBER 15 AND MARCH 1 TO MAY 31.
 6. ALL PLANT MATERIAL SHALL BE GUARANTEED BY THE CONTRACTOR FOR A PERIOD OF 1 YEAR FROM THE DATE OF FINAL ACCEPTANCE TO BE IN GOOD, HEALTHY, AND FLOURISHING CONDITION.
 7. PLANT MATERIALS (REFER TO PLANT LIST ON THE DRAWINGS FOR SPECIFIC TYPES AND QUANTITIES OF PLANTS):
 - A. PLANTS SHALL BE NURSERY-GROWN IN ACCORDANCE WITH GOOD HORTICULTURAL PRACTICES. PLANTS SHALL BE OBTAINED FROM LOCAL NURSERIES AND/OR OTHERS WHICH HAVE SOIL AND CLIMATIC CONDITIONS SIMILAR TO THOSE IN THE LOCALITY OF THE PROJECT.
 - B. PLANTS SHALL BE TRUE TO SPECIES AND VARIETY AND UNLESS SPECIFICALLY NOTED OTHERWISE, ALL PLANTS SHALL BE OF SPECIMEN QUALITY.
 - C. PLANTS SHALL BE SOUND, HEALTHY AND VIGOROUS, WELL BRANCHED AND DENSELY FOLIATED WHEN IN LEAF, FREE OF DISEASE, INSECT PESTS, EGGS, OR LARVAE, AND SHALL HAVE HEALTHY, WELL-DEVELOPED ROOT SYSTEMS. THEY SHALL BE FREE FROM PHYSICAL DAMAGE OR ANY CONDITIONS THAT WOULD PREVENT THRIVING HEALTH AND THE DESIRED APPEARANCE.
 - D. PLANTS SHALL CONFORM TO MEASUREMENTS SPECIFIED IN THE PLANT SCHEDULE EXCEPT THAT PLANTS LARGER INCREASE THE CONTRACT PRICE. IF LARGER PLANTS ARE ACCEPTED, THE ROOT BALL SHALL BE SIZED FOR THE LARGER PLANT.
 - E. CALIPER MEASUREMENT SHALL BE TAKEN AT A POINT ON THE TRUNK 6 INCHES ABOVE NATURAL GROUND LINE FOR TREES UP TO 4 INCHES DIAMETER, AND AT A POINT 12 INCHES ABOVE THE NATURAL GROUND LINE FOR TREES OVER 4 INCHES IN DIAMETER.
 - F. PLANTS SHALL BE MEASURED WHEN BRANCHES ARE IN THE NORMAL POSITION. HEIGHT AND SPREAD DIMENSIONS SPECIFIED REFER TO THE MAIN BODY OF THE PLANT AND NOT FROM BRANCH TIP TO TIP.
 8. PREPARATION OF AREAS FOR PLANTING
 - A. GRADE SOIL MEDIUM ACCORDING TO SOIL DETAILS SPECIFIED ON THIS SHEET.
 - B. STAKE OUT ALL PLANT MATERIAL BEDS AND SHRUB LOCATIONS FOR APPROVAL OF LANDSCAPE ARCHITECT OR OWNER PRIOR TO ANY BED PREPARATION.
 9. GENERAL PLANT INSTALLATION:
 - A. EXCAVATION: EXCAVATE ALL PLANTING AREAS TO THE WIDTH AND DEPTH SHOWN IN THE PLANTING DETAILS.
 - B. CENTER PLANT IN PIT AND ORIENT FOR THE BEST VISUAL EFFECT. SET PLANTS PLUMB AND HOLD RIGIDLY IN POSITION UNTIL SOIL HAS BEEN TAMPEDED FIRMLY AROUND ROOTS.
 - C. WATER WELL AT TIME OF PLANTING AND DAILY FOR ONE WEEK FOLLOWING PLANTING.

NOTE:
SOIL DEPTHS SPECIFIED ON THIS SHEET ARE IN INCHES. SEE SHEET 2 FOR SECTION DETAILS.



14088-M Sullyfield Circle • Chantilly, VA 20151
Phone 703 631 5800 • Fax 703 631 5804
wetlandstudies.com

WETLAND STUDIES AND SOLUTIONS, INC.
VIRGINIA GATEWAY SITE PLAN
 GAINESVILLE DISTRICT, PRINCE WILLIAM COUNTY

GREEN ROOF SOIL DEPTHS

Copyright © 2005 Wetland Studies and Solutions, Inc.

REVISIONS			Rev. By	App. By
No.	Date	Description		

DATE: JUNE 2005 SCALE: 1" = 5'

Design	JMT	App. By	JMT
Draft	JBP	App. By	JMT

Computer File Name: L:\129\Gainsville\CD\WSS\Draws\Roofing.dwg
 Sheet # 2 of 3